



Project Case Sweden, 2015-17 – The Pyramiden blocks

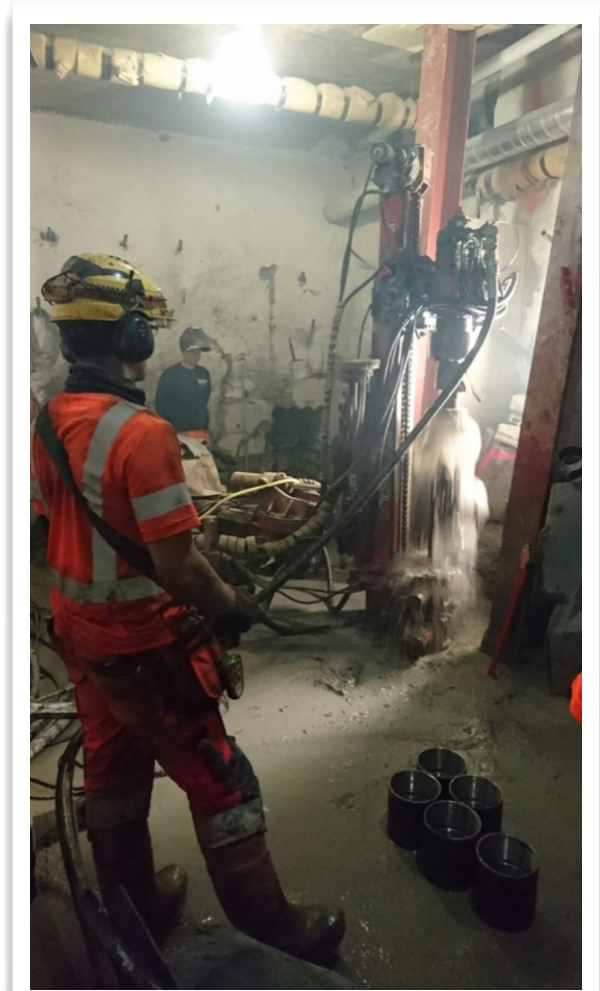


Project scope

- Underpinning for ground reinforcement of housing community
- Number of holes: 72
- Depth: 18-25 m, 59-82 ft.
- Scope of drilling/total meters: 1 548 m, 5 100 ft.
- Why water-propelled drilling?
Due to requirements on work environment, minimization of risk settlement as well as increased production.

Equipment & geology

- Hammer model/sizes: WAI 50i
- Drill bit/Casing system:
Symmetrix Ø170 mm x t=12.5
and t=10 mm
- Pump: GDS 720 Twin, 720 lit/min @
190 bar, serving two rigs in parallel
- Water source: Housing community
water supply
- Drill rig: Commachio MC-235, small-built underpinning rig
- Geologic formation: Fill, seabed, sand/moraine, bedrock



Main stakeholders

- Commissioner: Svenska Bostäder
- Main contractor: Skanska
- Sub-contractor: Besab



Project & drilling results

Drilling finished ahead
scheduled period of time.

The unique Twin 720 diesel pump from GDS

